

Comfort Cove[®]

The Energy Efficient Heating Solution



WIRELESS THERMOSTATS

by

Honeywell



Save time and money with our new Honeywell® wireless EConnect™ advanced design thermostat is a three piece kit including a programmable thermostat control, Equipment Interface Module and antenna. The EConnect™ is the most versatile comfort control to date with multiple accessory features such as WiFi connectivity, remote control and wireless outdoor weather sensor.



SAFE

ECONOMICAL

ENERGY EFFICIENT

COMFORTABLE

SPACE SAVING

Wireless Comfort Control Explained

Wireless Electric Heat Control

The WTL-9000 includes a 3 piece system allowing for wireless electric heat control. The Thermostat face communicates wirelessly to an antenna which is connected to an equipment module, or, relay, controlling when the heater is to energize.



Popular Wireless Applications

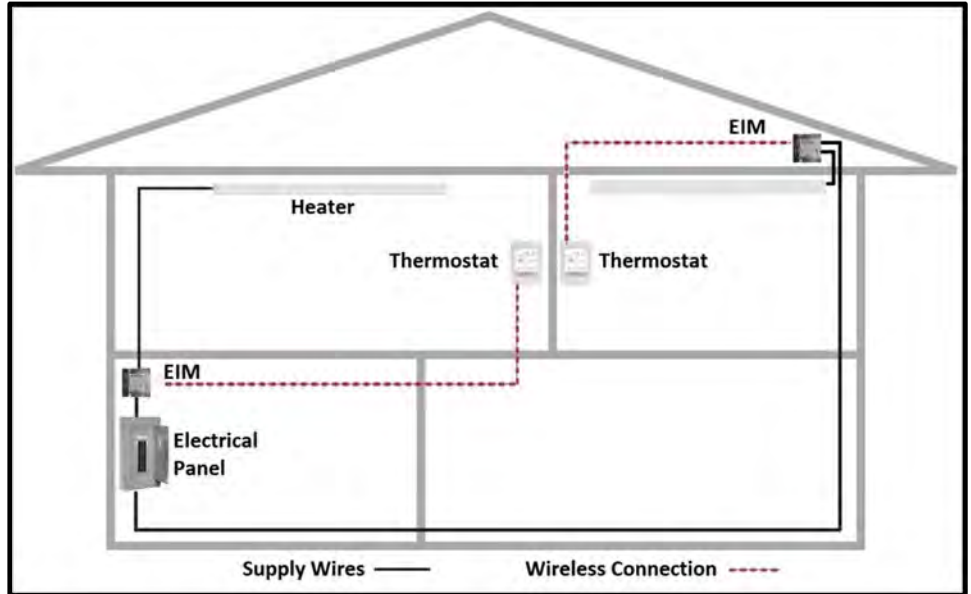
- Retrofit Solution
- Solid Wall Solution
- Reduce Labor Costs
- Additional Capabilities
 - Internet Control
 - Remote Control
 - Outdoor Sensor



Key Wireless Features

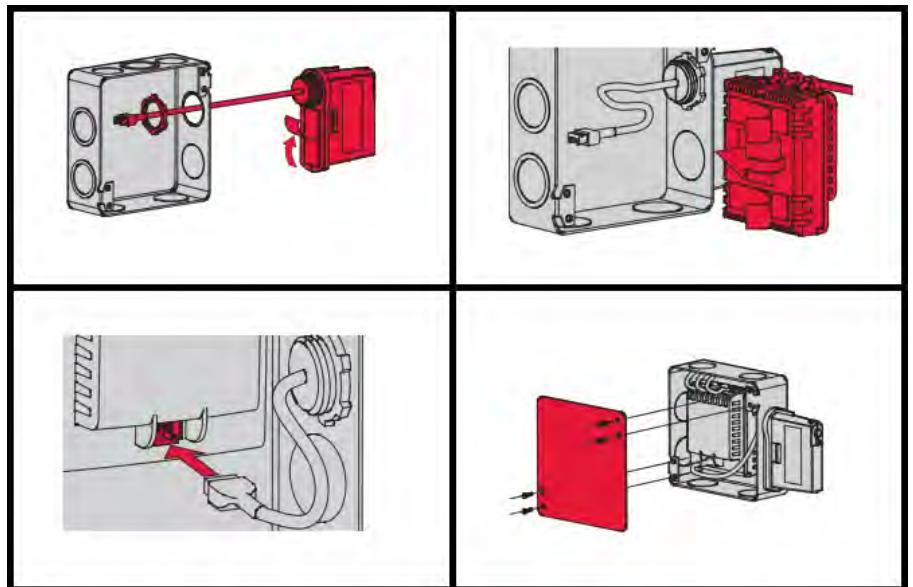
- 7, 5-2 Day programmable
- +/- 1° F Accuracy
- Controls up to 8 Electric Interface Modules (EIM)
- 12.5 AMP
- 120v – 1500 watts max
- 240v – 3000 watts max
- SPST; 120/240V
- 3 Year Warranty

Wiring Comfort Cove® for Wireless Control



WTL-9000 Application Benefits

- Perfect solution for limited or no access areas
- Solution for limited access to thermostat location
- Mount thermostat anywhere in heating zone
- Exposed conduit line solution for solid wall construction



EIM & Antenna Installation

The Equipment Module & Antenna do not fit inside our Comfort Cove heater. Honeywell® recommends mounting the Equipment Module & antenna in a remote double gang junction box. This can be mounted anywhere on the heater power line.

Wireless Comfort Control

#1 Trusted Brand
made by the industry leader of temperature control products

Easy Programming
7 day & 5-2 day features permanent and temporary hold settings or set as non-programmable

Electronic Temperature Control
on screen with precision $\pm 1^\circ$ F accuracy

Wireless Thermostat
save money, time and appearances from running wire to and from the thermostat location



WTL-9000 Thermostat

Slim & Sleek
low profile thermostat face with easy mounting

Heating Indicator
convenient confirmation that the heat is on

Constant on Screen
temperature setting showing current program temperature

RedLINK Enabled
communicates with all RedLINK-enabled accessories



Model Information

Model	Voltage	Wattage	Amperes	Pole
WTL-9000	120, 240	1500, 3000	12.5	SPST

Honeywell 



RedLINK Accessories



RedLINK Internet Gateway
Connects thermostat to the internet to provide remote access to Comfort Cove from PC, smart phone or tablet.



Wireless Outdoor Sensor
Connects wirelessly to display outdoor temperature on all WTL-9000 thermostats and on the optional remote comfort control.



Portable Comfort Control
Connects wirelessly to up to 16 WTL-9000 thermostats to control Comfort Cove® from anywhere in the home.